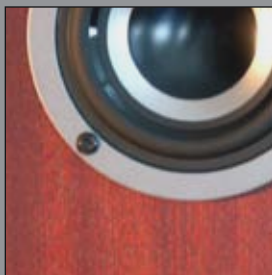




ACOUSTIC  
TECHNOLOGIES<sup>LLC</sup>®

*“Pure Sound for Pure Emotion”*

---



## OUR **MOTIVATION**: PURE SOUND

The non plus ultra for music lovers and audiophiles are loudspeakers capable of precisely reproducing the sounds of musical instruments and voices as they were recorded.

Most loudspeakers rely on electronic circuits and multiple drivers, each dedicated to a limited frequency range, to attempt accurate reproduction of original sound recordings. Unfortunately, every additional circuit and driver introduces some amount of unwanted interference and distortion, potentially degrading the reproduction of the original sound recording.



## OUR **SOLUTION**: LESS IS MORE

At Acoustic Technologies, LLC, we believe that less is more. We have eliminated components that can degrade the sound and prevent the loudspeaker from reproducing acoustic subtleties, tone and detail in your favorite recordings. There are no multiple drivers and no cross-over or equalization circuits to add distortion.

Instead, our unique patent-pending loudspeakers combine a single 3" full range driver with an ingenious enclosure that serves as an amplifier and resonator to accurately reproduce coherent, naturally synthesized sound over a large range of frequencies. Our loudspeakers create a realistic three-dimensional listening experience over a previously unattainable range of listening positions. Our loudspeakers do not have a sweet-spot, therefore allowing the listener to roam freely around the room (or even leave it) and still retain a realistically wide, deep, and tall soundstage image in which all performers remain in their (virtual) location. Our speakers pay particular attention to Time Domain considerations (an almost totally neglected aspect of reproduced sound) and take their inspiration from acoustic instruments. Listen for yourself to the Acoustic Technologies, LLC speakers and you will experience the presentation of music like no other.



# CLASSIC



## Classic-Series

Type	Full range, single-driver loud speaker
Driver	3" w/ titanium cone
Internal Wiring	Solid silver (99.99% Purity)
Binding Posts	Gold-plated copper (Cardas CCGGL)
Crossover/Filter	None
Nominal Impedance	8 Ohms
Rated Power Input	15 Watts
Maximum Power Input	30 Watts
Dimensions (H x W x D)	43 1/4 x 6 1/4 x 9 3/4 in.
Net Weight	35 lbs. per speaker
Available Finishes	Mahogany Red Satin, Black Matte and Clear Cherry

### Key features of the Classic-Series include:

- Realistic 3D sound staging
- Small profile
- Low power consumption
- No sweet spot

Additional veneer and color options available upon request and at additional cost. Acoustic Technologies, LLC reserves the right to change specifications, features and/or prices without notice.



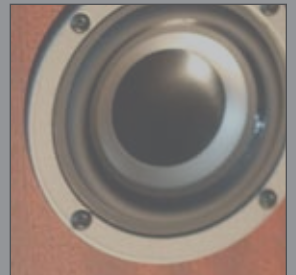
DRIVEN BY A **PASSION** FOR MUSIC,

**ACOUSTIC TECHNOLOGIES LLC**

HAS CREATED LOUDSPEAKERS THAT

**IMMERSE** THE LISTENER IN

THE **PURITY** OF SOUND.



ONE NORTH WACKER DR. | SUITE 4130 | CHICAGO, IL 60606  
T: 312.948.4400 | F: 312.984.0146  
[WWW.SINGLEDRIVER.NET](http://WWW.SINGLEDRIVER.NET)  
[INFO@SINGLEDRIVER.NET](mailto:INFO@SINGLEDRIVER.NET)